



**Redefining Your World**

[www.redefinedeng.co.za](http://www.redefinedeng.co.za)

# Redefine your World

**We are committed to providing our clients with service excellence in Civil and Structural Engineering.**

By using state-of-the-art technology, which improves quality and efficiency, we aim to provide a complete life cycle approach with each project and strive to deliver a cost centric solution for our clients.



## TRANSPORT

- Planning of major arterials and minor roads,
- Rehabilitation, road markings and pavement design,
- Township and development infrastructure for National and Provincial roads



## STORMWATER

- Conduits, open channels and retention ponds
- Embankment and erosion protection,
- Flood Line Certification



## WATER & SANITATION

- Sewer networks and bulk sewer mains
- Water reticulation networks, bulk water mains and fire analysis.

## STRUCTURES AND BUILDINGS

- Design and supervision of all residential, commercial and industrial structures. Including schools, clinics, offices, hotels and residential housing

## RESIDENTIAL

- Design and supervision of all types of residential structures
- Township Planning and Outline Scheme Reports

**RCE has been appointed to and completed many successful projects as a consultant or sub-consultant.**

### Some of our highlight projects:

- **Steyn City** - Commercial & residential - R1BN
- **BRT (JHB)**- Project Managers - R 340M
- **Group 5 Housing** - 220 Units Midrand 3 level Multi Storey- R 105M
- **MMI Doornkraal Residential Estate** - R 94M
- **Brindle Mews, KZN**- Multi-storey Residential building - R 60M
- **Alley Roads, Delmas** - 400 Housing Units- R 60M
- **Croco Lodge Boutique Hotel** R 60M
- **Broadacres Primary School** R40M
- **Bidvest Seaworld Bloemfontein** - R 30M
- **Low cost housing project, Delmas** - R 25M
- **Bidvest Seaworld Polokwane** - R 20M



# Slab innovation

## We are the service specialists for concrete works.

RCE is leading the way in Pre-cast suspended slabs and energy efficient slab applications which seek to embrace energy efficient building regulations and methods.

### DESIGN

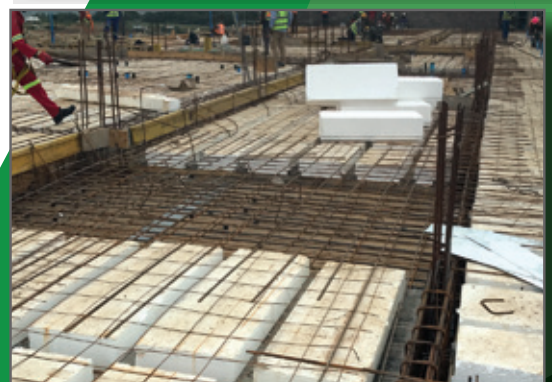
We provide design services in implementing your chosen slab system. Our qualified team provides structural engineering design expertise to any project.

### SUPPLY

We are one of South Africa's leading rib and block slab suppliers. We offer a wide range of concrete slab products including our very own Thermal Slab System addressing the needs of energy efficient building practice in terms of SANS 10400 XA.

### CONSULTING

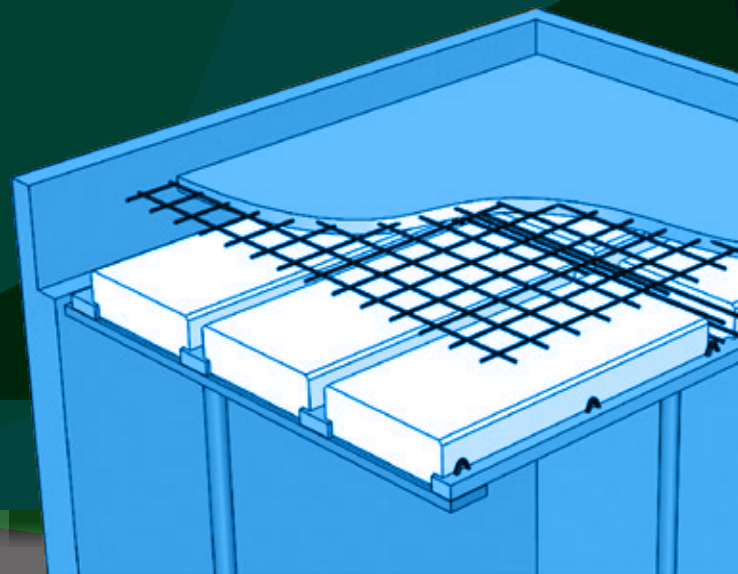
Let us be your guide for your by working with our consultants who offer prompt and professional service across the board. We handle full Civil & Structural consulting, council appointments, NHBRC registrations and completion certificates



## Thermal Slab System

With ever increasing building costs, the requirement for rapid building and greater awareness of energy conservation as an important aspect of building design, expanded polystyrene (EPS) is becoming increasingly used in modern day construction.

With the advent of SANS 204 and the legislation of SANS 10400XA calling for more energy efficient construction technologies and building methods. The use of EPS in slab construction has become more prolific.





**Redefining Your World**

**RCE Consulting Engineers**

**Telephone:** 083 415 7277

**Fax:** 086 695 8413

**Email:** [info@redefinedeng.co.za](mailto:info@redefinedeng.co.za)

**Address:** 33a Trotting Close, Sun Valley,  
Midrand



[www.redefinedeng.co.za](http://www.redefinedeng.co.za)